

SOUTH CAROLINA

2018



HURRICANE



GUIDE

**KNOW YOUR ZONE
PREPARATION TIPS
EVACUATION MAPS
RETURNING HOME**



SCEMD
scemd.org @SCEMD

MAKE IT PERSONAL.

THIS GUIDE IS VALID FROM JUNE 1 UNTIL NOVEMBER 30, 2018

KNOW

The Terms

Terms and definitions to be better prepared for Hurricane Season.

Hurricane

An intense tropical weather system with a well-defined circulation and maximum sustained winds of 74 mph (64 knots) or higher.

Tropical Storm

An organized system of strong thunderstorms with a defined circulation and maximum sustained winds of 39 to 73 mph (34-63 knots).

Tropical Depression

An organized system of clouds and thunderstorms with a defined circulation and maximum sustained winds of 38 mph (33 knots) or less.

Storm Surge

Storm surge inundation is the total water level that occurs on normally dry ground as a result of the storm tide, and is expressed in terms of height of water, in feet, above ground level.

Tornadoes

Even though a hurricane or tropical storm weakens as it moves inland, it can produce deadly and damaging tornadoes.

Flooding

Typically, hurricanes bring heavy rains which can compound drainage problems in areas experiencing storm surge flooding. Rainfall totals of 10 inches or more are not uncommon when a tropical storm or hurricane moves across a coastal location. Over land, torrential rain may continue even after the wind has diminished which could easily result in destructive flash flooding and river flooding.

WATCHES AND WARNINGS



Because outside preparedness activities become difficult once winds reach tropical storm force, the National Hurricane Center issues watches 48 hours in advance of the anticipated onset of tropical-storm-force winds. The NHC issues warnings 36 hours in advance of the predicted onset of tropical-storm-force winds.

Storm Surge Watch

A storm surge watch is defined as the possibility of life-threatening inundation from rising water moving inland from the shoreline somewhere within the specified area, generally within 48 hours.

Tropical Storm Watch

An announcement that tropical-storm conditions are possible within the specified area.

Hurricane Watch

An announcement that hurricane conditions are possible within the specified area.

Action: Prepare your home and review your plan for evacuation in case a Hurricane or Tropical Storm Warning is issued. Listen closely to instructions from local officials.

Storm Surge Warning

A storm surge warning is defined as the danger of life-threatening inundation from rising water moving inland from the shoreline somewhere within the specified area, generally within 36 hours.

Tropical Storm Warning

An announcement that tropical-storm conditions are expected within the specified area.

Hurricane Warning

An announcement that hurricane conditions are expected within the specified area.

Action: During a warning, finish storm preparations and immediately leave the threatened area if directed by local officials. Have a plan for where you will stay such as with family or friends, at a hotel or at a shelter.

Extreme Wind Warning

Extreme sustained winds of a major hurricane (115 mph or greater), usually associated with the eyewall, are expected to begin within an hour.

Action: Take immediate shelter in the interior portion of a well-built structure.



Additional watches and warnings may be issued to provide detailed information on specific threats such as floods and tornadoes. Local National Weather Service offices issue flash flood/flood watches and warnings as well as tornado warnings.

EAS STATIONS

The following radio and television stations are key participants in the Emergency Alert System and S.C. Public Radio. They broadcast emergency information throughout the state, as do numerous other radio and television stations:

Charleston	Aiken/Augusta	SC Public Radio
WIWF 96.9 FM	WBBQ 104.3 FM	WLTR 91.3 FM (Columbia)
WEZL 103.5 FM	WLUB 105.7 FM	WSCI 89.3 FM (Charleston)
Grand Strand	Columbia	WRJA 88.1 FM (Sumter/Columbia)
WYAV 104.1 FM	WCOS 97.5 FM	WNSC 88.9 FM (Rock Hill)
WLFF 106.5 FM	WTCB 106.7 FM	WJWJ 89.9 FM (Beaufort/Hilton Head)
Florence	York	WEPR 90.1 FM (Greenville/Spartanburg)
WJMX 103.3 FM	WRHI 1340 AM	WHMC 90.1 FM (Conway/Myrtle Beach)
WYNN 106.3 FM	WRHM 107.1 FM	WLJK 89.1 FM (Aiken)
Upstate	WNSC 88.9 FM	
WFBC 93.7 FM		
WESC 92.5 FM		

INSURANCE

From the S.C. Department of Insurance:

1. Review your insurance policy so that you know if you have adequate coverage.
2. Be sure to understand the difference between replacement cost and actual cash value.
3. Know your policy's deductibles and the procedures to take when property is damaged or destroyed.
4. A standard homeowners or renters policy does not cover damage from flood; you will need to purchase a separate flood insurance policy. Visit floodsmart.gov for more information.
5. Make a property inventory list of valuables, furniture, electronics, etc. Take pictures of your property with your mobile device so you can have a visual record of your belongings.
6. Develop an emergency plan that will prepare you in case you need to evacuate your home or take shelter.
7. If you do evacuate, carry your important documents with you.
8. When a hurricane or severe storm is imminent, remove outdoor objects like lawn furniture and garbage cans that may be blown by the wind. Protect window openings with storm shutters.
9. If your home is damaged in a severe storm, contact your insurance company as soon as possible.
10. Secure your property and make temporary repairs to protect it from further damage. Be careful when inspecting your property as fallen debris can be hazardous. Be sure to keep all receipts for materials used for repairs.

Ways to Save on Insurance Costs:

Catastrophe savings accounts are state income tax free savings accounts that allow the homeowner to set aside funds to pay for qualified expenses such as deductibles. Insurance premium discounts are available for homes that have been made more storm resistant. Retrofits include storm shutters, roof tie-downs, and reinforced garage doors among others. State income tax credits are available for property owners who purchase supplies to retrofit and make their homes more resistant to hurricanes and severe storms.



For questions and additional information, please visit doi.sc.gov or call the department's Office of Consumer Services toll-free number, 1-800-768-3467

NOAA WEATHER RADIO

County	Freq.	County	Freq.	County	Freq.
Abbeville	162.550 162.425	Dillon	162.400 162.550	Marion	162.400 162.550
Aiken	162.450 162.550 162.500	Dorchester	162.550 162.525 162.475 162.450	Marlboro	162.450 162.400 162.550
Allendale	162.500 162.450	Edgefield	162.425 162.450 162.550	McCormick	162.550 162.425
Anderson	162.550	Fairfield	162.400 162.425	Newberry	162.400 162.550 162.425
Bamberg	162.500 162.450 162.525	Florence	162.400 162.550	Oconee	162.450 162.550 162.425
Barnwell	162.500 162.425	Georgetown	162.400 162.550 162.500 162.550	Orangeburg	162.500 162.400 162.475 162.525
Beaufort	162.450 162.400	Greenwood	162.550 162.425	Pickens	162.550
Berkeley	162.550 162.475	Hampton	162.500 162.450	Richland	162.400 162.425 162.525
Calhoun	162.400 162.525	Horry	162.400 162.450 162.400	Saluda	162.400 162.425
Charleston	162.550 162.450	Jasper	162.400	Spartanburg	162.550
Cherokee	162.550 162.425 162.475	Kershaw	162.400 162.450 162.550	Sumter	162.400 162.550 162.525 162.425
Chester	162.425	Lancaster	162.450	Union	162.550 162.425
Chesterfield	162.450 162.400 162.550	Laurens	162.550 162.425	Williamsburg	162.400 162.550 162.475 162.550 162.475
Clarendon	162.475 162.550 162.525 162.425	Lee	162.450 162.400 162.550 162.425 162.400	York	162.550 162.425
Colleton	162.500 162.450 162.550 162.450	Lexington	162.525		
Darlington	162.550				

PREPARE

Hide from the wind...

The **Saffir-Simpson Hurricane Wind Scale** estimates potential property damage based on a hurricane's sustained wind speed. Hurricanes reaching Category 3 and higher are considered major because of their potential for significant loss of life and property damage. Category 1 and 2 storms are still dangerous, and require preventative measures.

Category 1

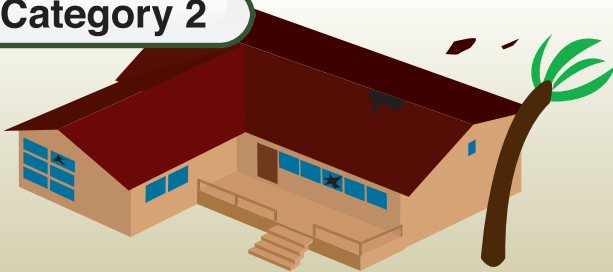


Category 1: Very Dangerous Winds will Produce Some Damage

Winds: 74-95 mph

Buildings could have damage to roof, siding and gutters. Large branches of trees will snap and shallowly rooted trees may be toppled. Extensive damage to power lines and poles can result in power outages that could last for several days.

Category 2

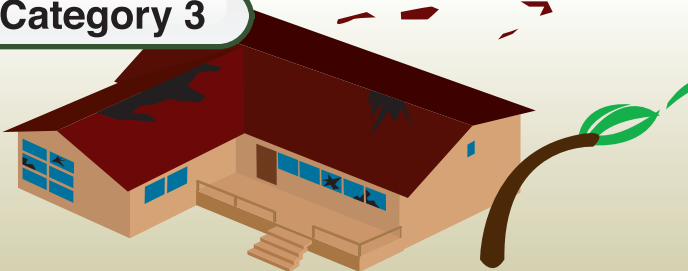


Category 2: Extremely Dangerous Winds will Cause Extensive Damage

Winds: 96-110 mph

Buildings could sustain major roof and siding damage. Many shallowly rooted trees will be snapped or uprooted and block numerous roads. Near-total power loss is expected with outages that could last from several days to weeks.

Category 3



Category 3: Devastating Damage will Occur

Winds: 111-129 mph

Buildings may sustain major damage, including loss of roof decking and gable ends. Many trees will be snapped or uprooted, blocking numerous roads. Electricity and water will be unavailable for several days to weeks after the storm passes.

Category 4



Category 4: Catastrophic Damage

Winds: 130-156 mph

Buildings can sustain severe damage with loss of roof structure and some exterior walls. Trees will be snapped or uprooted and power poles downed, isolating residential areas.

Catastrophic Damage: Power outages will last weeks to possibly months. Most of the area may be uninhabitable for weeks or months.

Category 5



Category 5: Catastrophic Damage

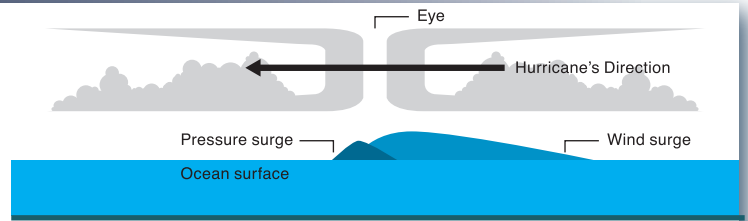
Winds: More than 157 mph

A high percentage of framed homes will be destroyed, with total roof failure and wall collapse. Fallen trees and power poles will isolate residential areas.

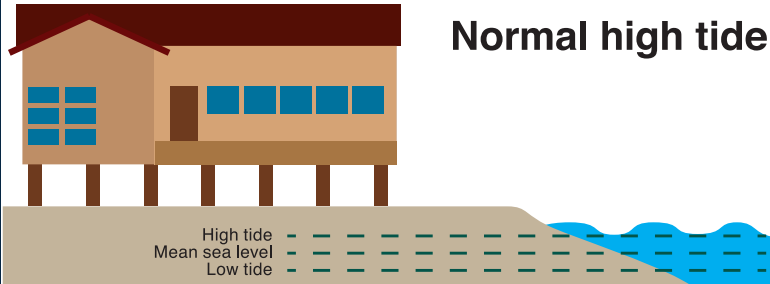
Catastrophic Damage: Power outages will last weeks to possibly months. Most of the area may be uninhabitable for weeks or months.

...and run from the water.

Storm surge is a dome of water that is pushed toward the shore by the force of the winds swirling around the storm. This advancing surge combines with the normal tides to create the hurricane storm tide, which can increase the mean water level 15 feet or more.

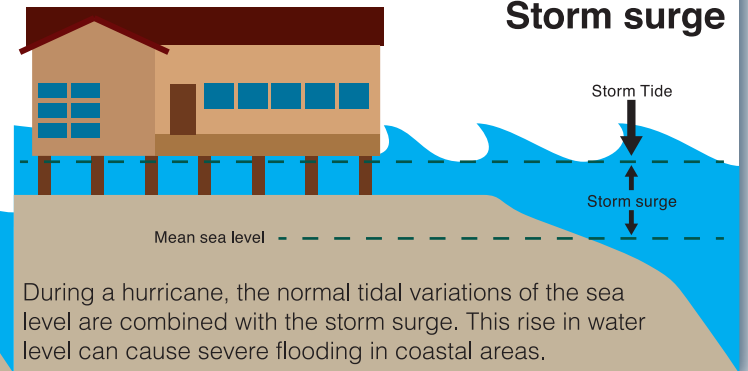


Normal high tide



In a normal tide there's an average variation of 2-3 feet from the mean sea level depending on the wind conditions and time of the year.

Storm surge



During a hurricane, the normal tidal variations of the sea level are combined with the storm surge. This rise in water level can cause severe flooding in coastal areas.

HURRICANE NAMES



2 0 1 8

Alberto	Helene	Oscar
Beryl	Isaac	Patty
Chris	Joyce	Rafael
Debby	Kirk	Sara
Ernesto	Leslie	Tony
Florence	Michael	Valerie
Gordon	Nadine	William

In the event that more than 21 named hurricanes occur in the Atlantic in a season, additional storms will take names from the Greek alphabet: Alpha, Beta, Gamma, Delta, etc.

2 0 1 9

Andrea	Humberto	Olga
Barry	Imelda	Pablo
Chantal	Jerry	Rebekah
Dorian	Karen	Sebastien
Erin	Lorenzo	Tanya
Fernand	Melissa	Van
Gabrielle	Nestor	Wendy

POWER POINTERS


- If you see a downed power line, do not touch it. Do not touch tree limbs or other objects touching a power line.
- Do not attempt to tie generators into the house circuit. This can be dangerous to you, your neighbors and to linemen. Plug appliances directly into the generator.
- Should the power go out while you are cooking, remember to turn the stove off and remove any cookware from the cooking surfaces and oven.
- Do not open refrigerators or freezers during an outage unless absolutely necessary. Repeated openings cause the cold air to escape and food to thaw more quickly.
- If you smell gas, leave your home immediately, and call the power company.





Start preparing for a power outage now. Visit scemd.org to find a list of all power utilities serving South Carolina complete with their outage reporting information.


RESIDENTS WITH FUNCTIONAL NEEDS




 Put your most important identification and medical records into a digital format for easy safekeeping and quicker movement because paper documents can easily get misplaced or damaged during a significant weather event.

 Put your name and contact information on your equipment in case it gets misplaced during the excitement of evacuation, sheltering, or shelter consolidation.

 Ask for help if you need it. Call your local emergency management office. Some offices have a list of people who need extra help during an emergency.

 Know yourself and have your plan ready and in place. Make sure other people know your plan too. Leave as soon as you can so you can reach your destination safely ahead of a storm.

 Review the hurricane preparation checklists in this guide. Think about any additional things you may need like batteries for hearing aids and similar devices, extra oxygen tanks, electrical backups for medical equipment or special food requirements.



The South Carolina Emergency Manager Mobile App

AVAILABLE NOW



- Build and customize a personal emergency plan.
- Keep track of your disaster supplies kit.
- “Know Your Zone” evacuation maps.
- Local emergency manager information.
- Emergency strobe light and alert whistle.
- Share your location with emergency contacts.
- Traffic and weather.
- Document storm damage.
- Push alerts from SCEMD.



IMPORTANT CONTACTS



S. C. Emergency Management Division
scemd.org

Public Information Phone System (PIPS)
1-866-246-0133*

*only activated as needed

*Spanish interpreters available

S.C. Department of Public Safety
EmergencyTraffic Network
sctrffic.org

S.C. Department of Transportation
scdot.org
855-GO-SCDOT (855-467-2368)

National Hurricane Center
hurricanes.gov

The Official Website of the State of South Carolina
sc.gov

S.C. Department of Insurance
doi.sc.gov
(803) 737-6160
(803) 768-3467

American Red Cross
redcross.org
1-866-438-4636

S.C. Salvation Army
doingthemoostgood.org
(704) 522-4970

FEMA
fema.gov
ready.gov

S.C. Commission for Minority Affairs
cma.sc.gov
(803) 333-9621

S.C. Department of Education
ed.sc.gov
803-734-8500

SCETV
scetv.org

S.C. Public Radio
scpublicradio.org

PREPARING PETS



Include your pet in your family disaster plan.

BEFORE

Including your pets in your family emergency plan is essential. Your veterinarian is an excellent resource to help you prepare. Here are some important tips:

- Evacuate with your pet outside of the evacuation zone. An emergency temporary shelter should be a last resort.
 - Have a cage/carrier for each pet – a means of containment will be needed anywhere you go.
 - Counties may have a temporary emergency shelter for pets, the South Carolina Emergency Manager mobile app and scemd.org will list open shelters.
 - Instead of shelters, consider boarding facilities, veterinary clinics, pet-friendly hotels, stables for horses or small livestock and homes of friends and relatives.
- Choose an identification method for each animal. Examples: micro-chipping and ID tags on collar. Have photos of yourself with your animals to prove ownership if you become separated.
 - Keep your animals' immunizations, especially rabies, current and be sure to have copies of all important documents.
 - Maintain a disaster 'go kit' for each pet in a quickly accessible site: cage/carrier large enough to stand and turn around in, leash, harness, bowls, 3-days of water and food, medications, health records/care instructions, microchip numbers, litter box/litter and clean-up supplies.

DURING

- In the immediate post-landfall period, there may be areas of extreme damage from winds or flooding. The immediate focus for emergency workers during this time will be human safety.
- When circumstances allow, there will be personnel trained in animal emergencies to assist emergency workers and citizens with animal needs. These may include rescue of displaced animals, ID, treatment, temporary shelter and care, and reunification with owners.
- Information about options for assistance with animals will be provided as soon as possible from SCEMD by way of news briefings and telephone hotlines.

AFTER

- If your pet is lost, contact your veterinarian, animal care/control organization and/or county and state emergency managers who can help you search lists and databases of animals that have been found and sheltered during the hurricane.
- Familiar scents and landmarks may be different after a hurricane. Your pet may become confused and lost.
- Watch your animals closely. The behavior of your pets may change after an emergency. Normally quiet and friendly pets may become aggressive or defensive. Leash dogs and place them in a fenced yard with access to shelter and water.



Animal rescue may not be available immediately after a hurricane.

OTHER RESOURCES

Clemson Livestock-Poultry Health
803-788-2260 | clemson.edu/LPH/emergencypreparedness

S.C. Department of Agriculture
803-734-2200 | agriculture.sc.org

S.C. Association of Veterinarians
1-800-441-7228 | scav.org

S.C. Animal Care and Control
843-329-1574 | scacca.org

EVACUATE



LEGEND

- INTERSTATE (I-20, I-95)
- U.S. (U.S. 17, U.S. 101)
- S.C. (S.C. 1, S.C. 171)
- SECONDARY (S.C. 20)

..... INTERSTATE ROUTES

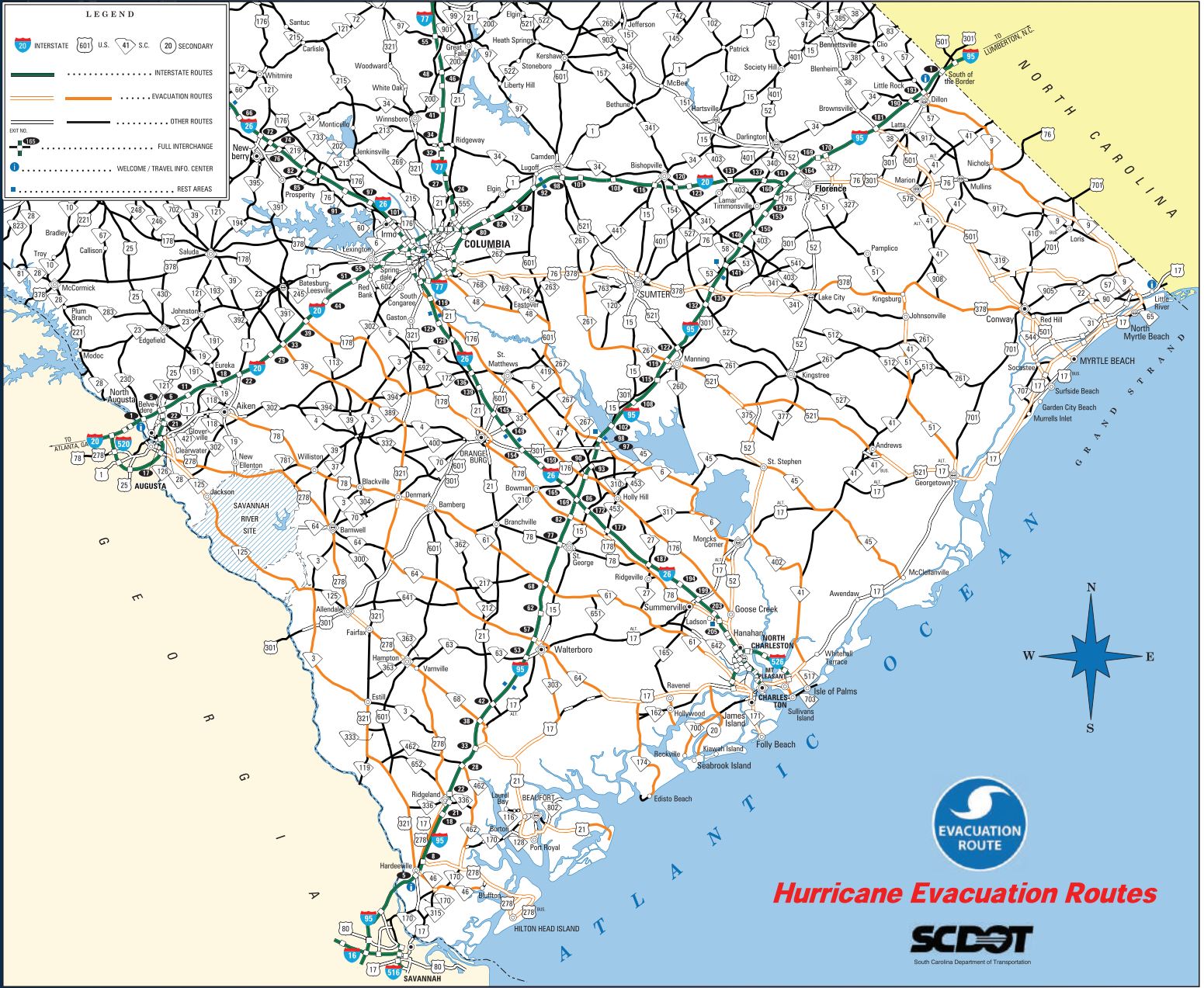
..... EVACUATION ROUTES

..... OTHER ROUTES

..... FULL INTERCHANGE

..... WELCOME/TRAVEL INFO. CENTER

..... REST AREAS



Hurricane Evacuation Routes



South Carolina Department of Transportation

EVACUATION ROUTES & LANE REVERSALS



Grand Strand Area

North Myrtle Beach and Northward

- Use SC 9 to proceed to I-95.

Myrtle Beach

- 10th Avenue North and northward to Briarcliff Acres use SC 22 (Conway Bypass) to US 501. Motorists using SC 31 (Carolina Bays Parkway) or the Grissom Parkway will be directed north to SC 22.
- South of 10th Avenue North southward to the Myrtle Beach Airport use US 501 toward Marion and beyond.
- Under certain conditions, US 501 will be converted to four lanes northbound from SC 22 to SC 576.
- Myrtle Beach Airport southward through Surfside Beach use SC 544 to US 501.
- Under certain conditions, US 501 will be converted to four lanes northbound from SC 544 to US 378. The reversed lanes will carry SC 544 traffic onto US 378 where it will travel westbound to I-95 or Columbia.

Garden City Beach South to Winyah Bay, Georgetown

- Take US 17 south through Georgetown, then take US 521 to SC 261 to US 378 to Columbia.
- Under certain conditions, an alternate route from Georgetown will be Black River Road to US 701 to SC 51 to SC 41 to US 378 at Kingsburg.

Charleston Area

Edisto Island, Adams Run

- Evacuees will take SC 174 to US 17. They will then take US 17 south to SC 64. This will take them to Walterboro, and then to Aiken and I-20.

Yonges Island, Meggett, Hollywood, Ravenel

- Use SC 165 to US 17, then US 17 south to SC 64 where they will go to Walterboro, then to Aiken and I-20.

Johns Island, Kiawah Island and Seabrook

- Use SC 700 to Main Road (S-20) to US 17.
- Evacuees will then take US 17 south to SC 64 where they will go to Walterboro, then to Aiken and I-20.

James Island and Folly Beach

- Use SC 171 to US 17.
- Evacuees should then travel south on US 17 to I-526 to the reversed lanes of I-26.

Awendaw and McClellanville

- Evacuees will take SC 45 to US 52 where they will be directed right onto US 52 to SC 375 to US 521 to SC 261 to US 378 to Columbia.

City of Charleston

- The west side of the city (West Ashley) will use SC 61 to US 78, US 321, and SC 389 to I-20.
- Downtown will use the normal lanes of I-26.

Daniel Island

- Evacuees will use I-526 or Clements Ferry Road as conditions warrant.

Hilton Head Island and Beaufort Areas

Hilton Head Island

- Hilton Head Island evacuees will use both the William Hilton Parkway (US 278 Business) and the Cross Island Parkway toll facility (US 278).
- As these two roads merge, a third lane will be formed by reversing flow on the inside eastbound lane of US 278. This lane will carry traffic from the toll facility to the three lane section beginning on the mainland.
- Lane assignments will be as follows:
 1. The right lane on US 278 westbound will exit onto SC 170, proceed to SC 462, then be directed to I-95 northbound at I-95 exit 28.
 2. The center lane on US 278 westbound will become the right lane at SC 170 which will be directed to I-95 northbound at exit 8.
 3. The left lane on US 278 westbound at SC 170 will continue on US 278 to Hampton and eventually to North Augusta.

Beaufort

- Two-Lane Evacuation: Evacuees will use the two present northbound lanes on US 21 to US 17. Upon reaching US 17, the right lane will be directed to US 17 north to SC 303 to Walterboro. The left lane will be directed to US 17 south, then to US 17 Alt/US 21 to Yemassee and then ultimately to North Augusta.
- Three-Lane Evacuation: Under certain conditions, a third northbound lane will be formed by reversing flow in the inside southbound lane of US 21 at US 21 Business west of Beaufort, accommodating traffic from US 21. This reversed lane will be directed to US 17 southbound and eventually I-95 northbound at exit 33 (Point South). The remaining two lanes will be used as described above for the two-lane evacuation.

North Charleston

- Evacuees will take US 52 (Rivers Avenue) to US 78 to US 178 to Orangeburg then to I-20 or continue on US 52 to US 176 or continue north on US 52.
- The right lanes of US 52 at Goose Creek will continue on to Moncks Corner. In Moncks Corner, evacuees will be directed onto SC 6, where SC 6 will take them toward Columbia.
- The left lanes of US 52 at Goose Creek will go onto US 176 to Columbia.
- Evacuees using SC 642 will travel west toward Summerville and take road S-22 (Old Orangeburg Road) to US 78 west.

East Cooper

- Evacuees leaving Mount Pleasant will take I-526 or US 17 south to I-26.
- Those leaving Sullivan's Island will use SC 703 to I-526 Business to access I-526, then I-26.
- Evacuees from the Isle of Palms will use the Isle of Palms connector (SC 517) to go to US 17, where the right lane will turn north on US 17, then proceed to SC 41, to SC 402, then to US 52 to SC 375, then to US 521, to SC 261 to US 378 to Columbia.
- Evacuees using the left lanes of the Isle of Palms connector will turn left to go to I-526 and then on to I-26.
- Evacuees on I-526 approaching I-26 from East Cooper will be directed to the normal lanes of I-26 if in the right lane of I-526.
- Those in the left lane of I-526 will be directed into the reversed lanes of I-26.

KNOW YOUR ZONE

PLAN • PREPARE • EVACUATE

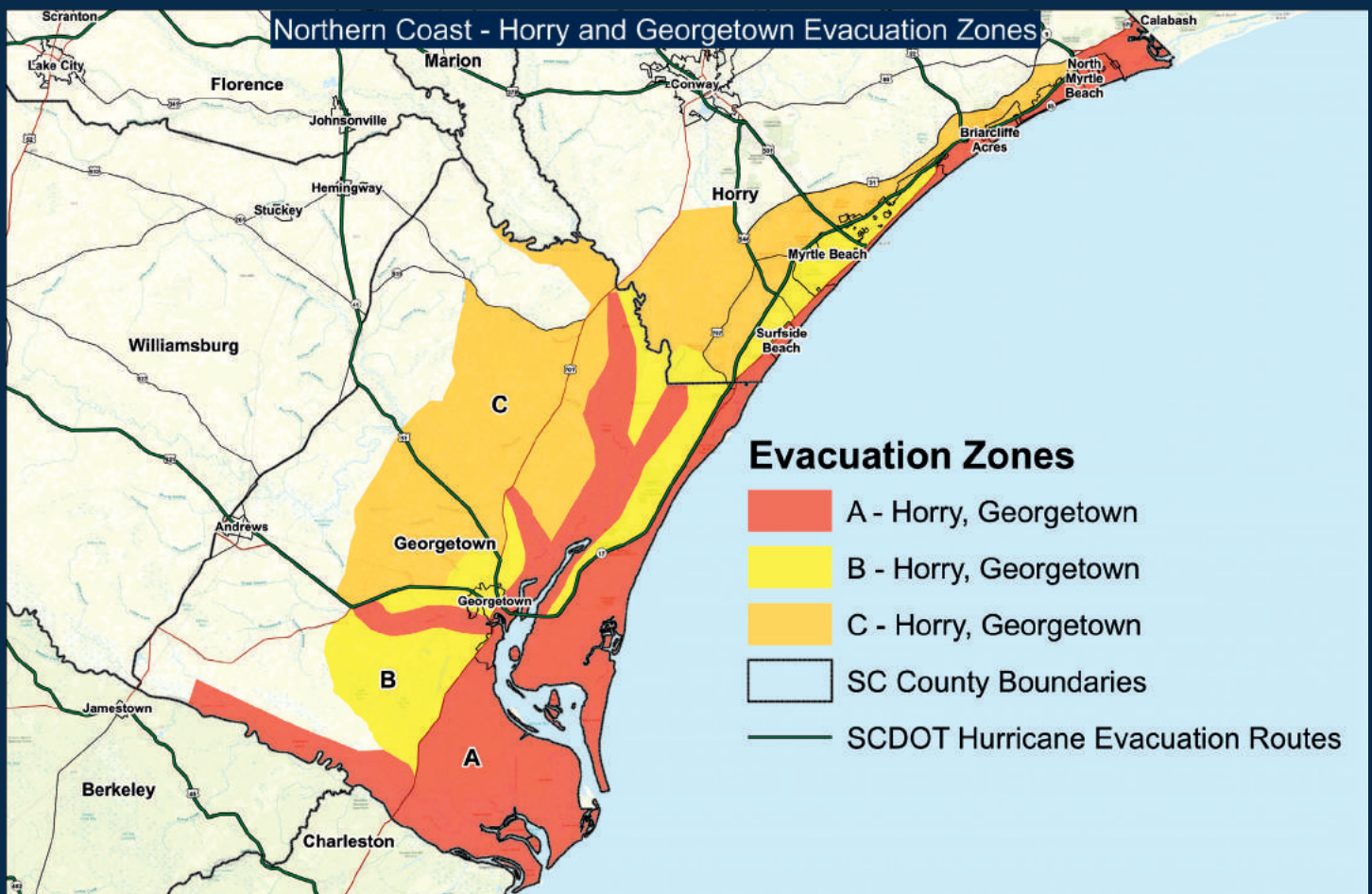
Use these maps to identify your correct hurricane evacuation zone. Include your zone information in your plan to evacuate prior to landfall of a hurricane.

These maps of the South Carolina coast show areas that are most vulnerable to tropical storm conditions. State and local authorities will announce evacuations by these designated zones.

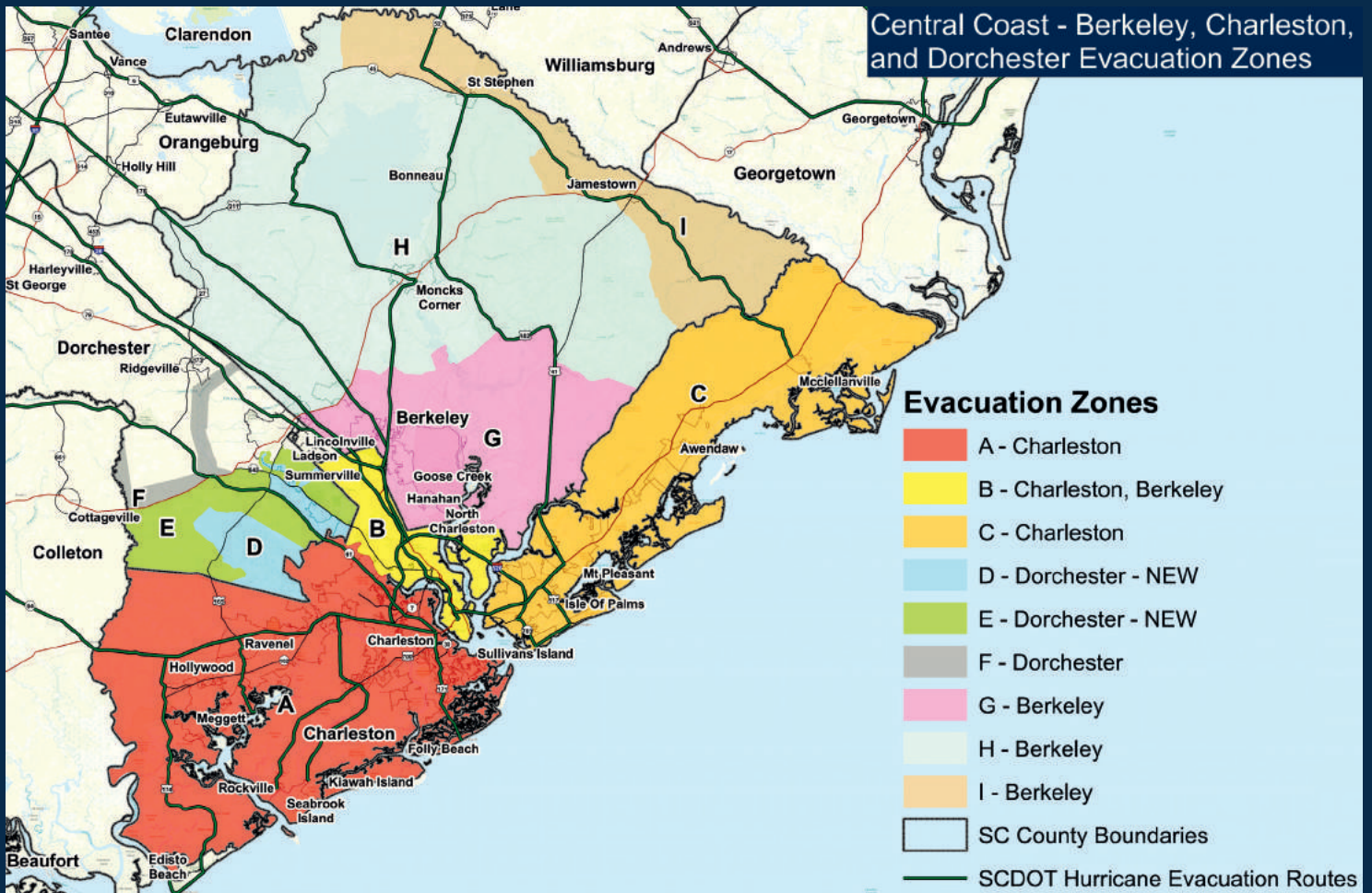
Actual storm conditions may require changes to the planned evacuation zones. Monitor local media for specific evacuation instructions. For more information, visit the Know Your Zone page at scemd.org.

KNOW YOUR ZONE
PLAN • PREPARE • EVACUATE

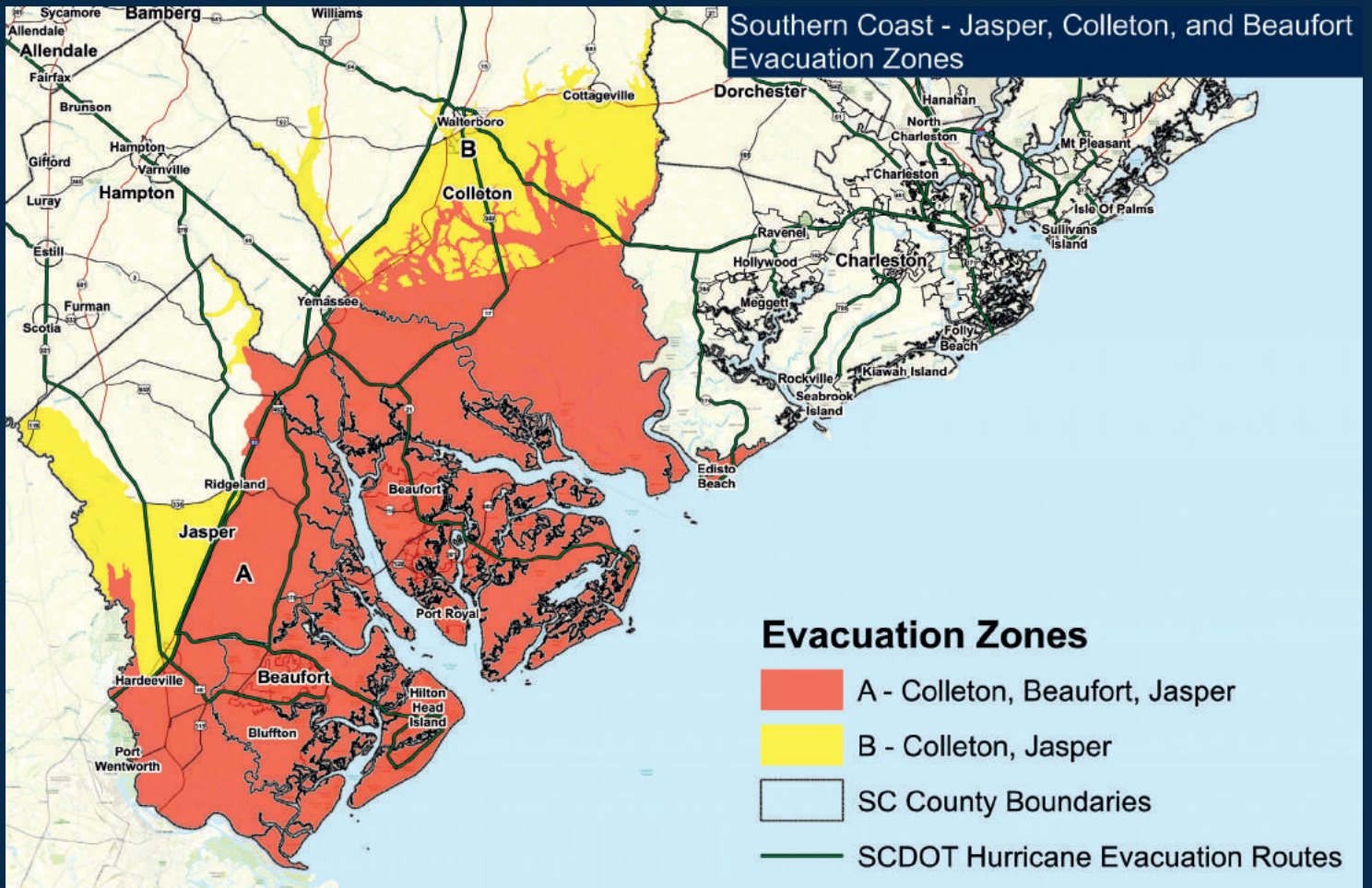
Know your zone instantly by downloading the South Carolina Emergency Manager in your mobile app store.



Central Coast - Berkeley, Charleston, and Dorchester Evacuation Zones



Southern Coast - Jasper, Colleton, and Beaufort Evacuation Zones



EVACUATION ACTIONS



BEFORE

Be Prepared

Contact your local emergency management office to help determine your vulnerability to a hurricane. Storm surge may extend beyond coastal areas, but hurricanes also bring high winds, tornadoes, heavy rains, and flooding in inland areas.

If you live in a vulnerable area, plan an evacuation route. Consider staying in a hotel or with family and friends outside the vulnerable area. Learn safe routes inland. Be ready to drive at least 20 to 50 miles inland to locate a safe place.

Before You Leave Home

- Know where you will go.
- Make arrangements for pets. Pets are not allowed in most shelters.
- Fuel up family vehicles and service them.
- Turn off gas, electricity, and water.
- Stay tuned to your local television and radio stations for emergency information.
- Charge your cell phone and mobile devices. (Have an extra charger for your phone, etc.)



In addition to the items listed in your Basic Disaster Supplies Kit, also carry road maps, jumper cables and a tire repair kit.

ON THE ROAD

Leave early. Take your time.

The South Carolina Emergency Response Team has been working in partnership with the petroleum industry in an attempt to make extra fuel available at certain filling stations along major evacuation routes.

Rest areas along I-26 will be enhanced with additional facilities to accommodate motorists efficiently. Department of Public Safety weigh stations will also be available as comfort stations.

DURING

Protect Yourself

- Stay tuned to your local television and radio stations for emergency information. Keep battery-operated, solar-powered or hand-crank operated radio or television for use during power outages.
- Stay inside a well-constructed building away from windows and doors, even if they are covered. Go to an interior first-floor room, closet, or under the stairs.
- Be alert. Tornadoes are often spawned during hurricanes.
- If the “eye” of the storm passes over your area, be aware that severe conditions will return with winds from the other direction in a very short time.
- Limit non-emergency calls. Keep calls brief to minimize network congestion. Wait at least 10 seconds before redialing a call. For non-emergencies, try text messaging from your mobile device.
- Once the storm passes, be patient. You will most likely not be able to return home right away.

SEEKING SHELTER



Emergency shelters are the place of last resort. Cots and blankets may not be provided in the shelter before the storm.

Emergency shelters may be opened should a hurricane approach South Carolina. Before heading to a public shelter, first consider staying with family and friends or in a hotel out of the evacuated area. If those options are unavailable, the American Red Cross will provide a safe place to stay when you have no other place to go. Cots and blankets will only be provided in the public shelter after hurricane conditions subside. Although food may be provided, specialty items for infants and individuals on restricted diets may not be available. If you plan to evacuate to a shelter, you will want to carry the supplies listed in your disaster supplies kit.

PLUS:

- Blankets, sleeping bags, pillows and cots.
- Special foods, if you are on a restricted diet.

During an evacuation, pay attention to emergency alerts via media and road signs for information about the nearest open shelter in case you need it.

RETURNING HOME



If you have evacuated, some areas may be inaccessible even after the official evacuation order is rescinded. **Return home only after local authorities advise it is safe to do so.** Keep tuned to your local radio and TV stations and monitor social media for recovery information.

Avoid downed and sagging power lines.

- Report them immediately to the power company, police or fire department.

Be alert for driving restrictions.

- Avoid flooded roads and washed-out bridges and roadways.
- Follow directions provided by public safety officials.

Enter your home with caution.

- Open windows and doors to ventilate and dry your home.
- Check refrigerated foods for spoilage.
- Use the telephone only for emergency calls.
- Beware of snakes, insects and other animals driven to higher ground by floodwater.
- Do not use candles or open flames indoors. Use a flashlight to inspect for damage.

Inspect the utilities in your home.

- **Check for gas leaks.** If you smell gas or hear a blowing or hissing noise, open a window and quickly leave the building. Turn off the gas at the outside main valve if you can. Call the gas company from a neighbor's home. If you turn off the gas for any reason, it must be turned back on by a professional.
- **Look for electrical system damage.** If you see sparks, broken or frayed wires, or if you smell hot insulation, turn off the electricity at the main fuse box or circuit breaker. If you have to step in water to get to the fuse box or circuit breaker, call an electrician first for advice.
- **Check for sewage and water line damage.** If you suspect sewage lines are damaged, avoid using the toilets and call a plumber. If water pipes are damaged, contact the water company and avoid water from the tap.



Never try to move or drive around barricades.



Local officials will provide information about how you can properly dispose of storm debris and damaged property.

Take pictures.

- Photos of the damage will help in filing insurance claims. Contact your insurance claims agent as soon as possible.

Let a relative know you are home.

- Tell them how to get in touch with you, especially if phone service is out.

Monitor the radio, TV and social media.

- Learn how to apply for possible assistance and how to receive further official information.

BASIC DISASTER SUPPLIES KIT



- "South Carolina Hurricane Guide"
- Flashlight(s) with extra batteries.
- Portable radio with extra batteries
- Mobile device chargers
- NOAA Weather Radio
- Non-perishable food for at least 3 days
- Bedding and clothing for each family member
- Blankets and towels
- Plastic dishes/eating utensils
- Rain jackets/pants
- Sunscreen/sunglasses/mosquito repellent
- Baby supplies (food, diapers, medication)
- Toothbrush, toothpaste
- Soap, shampoo and other personal hygiene items
- Driver's license, Social Security card, proof of residence, insurance policies, wills, deeds, birth and marriage certificates, tax records, medical records, family pictures, etc.
- Cash, enough to fill up your vehicle with gas
- Sanitary supplies
- First Aid Kit, including any prescription medications
- Bottled water (2 gallons per person per day)
- Pet supplies (food, leash & carrier, vaccination records)

2018 SC HURRICANE GUIDE



This Hurricane Guide was compiled and produced by the S.C. Emergency Management Division as a public service in coordination with state, federal, local and volunteer agencies, including the S.C. Department of Public Safety, S.C. Commission for Minority Affairs, Clemson University Extension Service, the S.C. Department of Insurance, National Weather Service, S.C. Broadcasters Association, S.C. Department of Natural Resources, Federal Emergency Management Agency, American Red Cross, S.C. Department of Transportation, and others.

Special appreciation goes to the organizations listed below that provided monetary contributions in support of this printing.



South Carolina



SCEMD

scemd.org

@SCEMD



HAVE A PLAN. STAY CONNECTED.

Visit the **NEW** scemd.org to stay connected during an emergency. The S.C. Emergency Management Division has launched a brand new website designed to make it easier for you to get information before, during and after a major disaster, such as a hurricane. The new scemd.org is accessible via your mobile device and will be your official online resource for emergency information from all state public safety organizations. Additionally, download the new South Carolina Emergency Manager mobile app to develop your personal emergency plan and follow the official @SCEMD pages on social media networks such as Facebook, Twitter, Instagram and others to stay connected during an emergency.